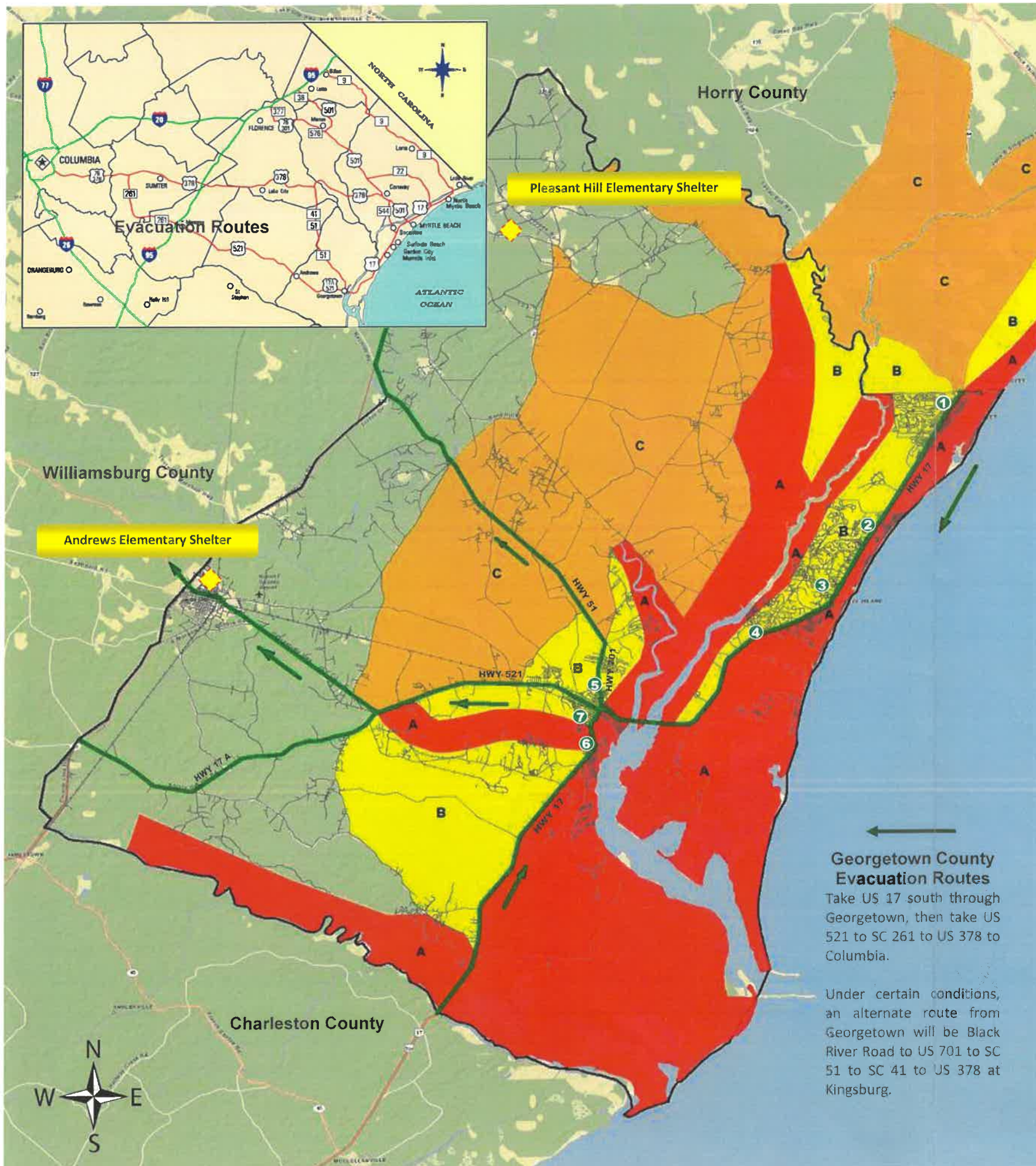


KNOW YOUR ZONE

LEARN — PLAN — EXECUTE

The Hurricane Information Guide for Georgetown County





One of the hardest decisions to make when a hurricane approaches is whether to stay put or travel hundreds of miles inland. To help you make the best decision possible, a new study conducted by the U.S. Army Corps of Engineers, the first of its kind since Hurricane Hugo in 1989, redefines the evacuation zones in Georgetown County. The new evacuation zones are based on a hurricane's storm surge potential, not the wind speed. That makes sense since flooding, not wind, does the most damage and kills the most people. The new study, based on better topography data, current road networks and the latest population growth, shows more people who haven't been required to evacuate during past hurricanes will have to do so now. This hurricane season we introduce three surge evacuation zones. And you need to **KNOW YOUR ZONE!** Remember, if you are ordered to evacuate, it's because there's a real possibility of storm surge reaching your home.

GEORGETOWN COUNTY EVACUATION ZONES

Evacuation Zone A

Areas East of Highway 17 to the Atlantic Ocean from the South Santee River and North to the Horry County line, including Sandy Island; areas East of Dawhoo Lake and South of Walker Road and Powell Road to the South Santee River; all low-lying areas along the Waccamaw River, Great Pee Dee River, Black River, and Sampit River South of Highway 521 (17A), including Maryville; and all mobile home residents in the County.

Evacuation Zone B

Areas East of Dawhoo Lake and South of Walker Road to Powell Road to the South Santee River; all areas on the Atlantic Ocean side of Powell Road to Alt. US 17 to Highway 521 to Brick Chimney Road to State Highway 51 to Black River Road ending at the Black River; all low-lying areas along the Waccamaw River, Great Pee Dee River, and Black River, and all areas East of them to the coast; and all mobile home residents in the County.

Evacuation Zone C

Areas East of Dawhoo Lake and South of Walker Road to Powell Road to the South Santee River; all areas on the Atlantic Ocean side of Powell Road to Alt. US 17 to Highway 521 to Sawmill Road to Indian Hut Road to Carvers Bay Road (State Highway S-22-4) to Plantation Hill Road (State Highway 261) to Old Pee Dee Road to the Northern County Line; and all mobile home residents in the County.

Georgetown County Evacuation Routes

Take US 17 south through Georgetown, then take US 521 to SC 261 to US 378 to Columbia.

Under certain conditions, an alternate route from Georgetown will be Black River Road to US 701 to SC 51 to SC 41 to US 378 at Kingsburg.

EMERGENCY SHELTER LOCATIONS

Emergency Shelters: Contact Georgetown County EMD for shelter openings at 843 545-3273

Pleasant Hill Elementary School, 127 School House Drive (Hwy 513)
Andrews Elementary School, 13072 County Line Road (Hwy 41)

EMERGENCY SHELTER TRANSPORTATION

Transportation to an emergency shelter will be provided on a limited basis if you have no other means to get to a shelter. Call the Emergency Management Department for information on when transportation will become available.

1. Food Lion - Hwy 707 & Hwy 17 (760 Mink Avenue), Murrells Inlet
2. Waccamaw Middle School - 320 Wildcat Way, Pawleys Island
3. Waccamaw Elementary School - 1364 Waverly Road, Pawleys Island
4. St. Mary's AME Church - 8833 Ocean Hwy, Pawleys Island
5. Tractor Supply Company - 1295 North Fraser Street, Georgetown
6. Food Lion - 2234 South Fraser Street (Maryville), Georgetown
7. St. Cyprian's Catholic Church - 1905 Front Street, Georgetown

ITEMS TO BRING TO THE SHELTER

- First aid kit
- Prescription medications
- Baby food and diapers
- Cards
- Games
- Books
- Toiletries (for a week)
- Battery-powered radio and extra batteries
- Flashlight and batteries
- Blankets or sleeping bags
- Identification and essential documents



Response Team (CERT) concept was initially developed and implemented by the Los Angeles City Fire Department in 1985, and was created to: educate people about disaster preparedness for hazards that may impact their area, and train them in basic disaster response skills. To become a CERT member, individuals must undergo the classroom-delivered CERT training where they will acquire basic knowledge and skills in:

- Disaster preparedness
 - Team organization
 - Fire safety and suppression
 - Disaster medical operations
 - Light search and rescue
 - Disaster psychology
 - Terrorism awareness/prevention
- Contact Georgetown County Emergency Management about CERT Training at 843 545-3273*



Plan for Pet Disaster Needs

- Emergency shelters cannot accept pets. Find out which motels and hotels in the area you plan to evacuate to allow pets -- well in advance of needing them.
- Take pet food, bottled water, medications, veterinary records, cat litter/pan, can opener, food dishes, first aid kit and other supplies with you in case they're not available later. While the sun is still shining, consider packing a "pet survival" kit which could be easily deployed if disaster hits.
- Make sure identification tags are up to date and securely fastened to your pet's collar. If possible, attach the address and/or phone number of your evacuation site. If your pet gets lost, his tag is his ticket home. Make sure you have a current photo of your pet for identification purposes.
- Make sure you have a secure pet carrier, leash or harness for your pet so that if he panics, he can't escape.
- Visit petswelcome.com for a pet friendly hotel

HURRICANE WATCHES AND WARNINGS

TROPICAL STORM WATCH

An announcement that tropical storm conditions with sustained winds of 39 to 73 mph are possible within the specified area within 48 hours.

TROPICAL STORM WARNING

An announcement that tropical storm conditions with sustained winds of 39 to 73 mph are expected somewhere within the specified area within 36 hours.

HURRICANE WATCH

An announcement that hurricane conditions with sustained winds of 74 mph or higher are possible within the specified area. Because hurricane preparedness activities become difficult once winds reach tropical storm force, the hurricane watch is issued 48 hours in advance of the anticipated onset of tropical-storm-force winds.

HURRICANE WARNING

An announcement that hurricane conditions with sustained winds of 74 mph or higher are expected somewhere within the specified area. Because hurricane preparedness activities become difficult once winds reach tropical storm force, the hurricane warning is issued 36 hours in advance of the anticipated onset of tropical-storm-force winds.

COMMON TERMS

EVACUATION

Is mandated by the Governor requiring evacuation of everyone within a certain evacuation zone.

TROPICAL DEPRESSION

Is a tropical cyclone in which the maximum sustained surface wind speed is 38 mph or less.

TROPICAL STORM

Is a tropical cyclone in which the maximum sustained surface wind speed ranges from 39 mph to 73 mph.

HURRICANE

Is a tropical cyclone in which the maximum sustained surface wind speed is 74 mph or higher.

STORM SURGE

An abnormal rise in sea level accompanying a hurricane or other intense storm, and whose height is the difference between the observed level of the sea surface and the level that would have occurred in the absence of the cyclone. Storm surge is usually estimated by subtracting the normal or astronomic high tide from the observed storm tide.

For additional information contact

GEORGETOWN COUNTY EMERGENCY MANAGEMENT

2222-C Highmarket Street Georgetown, South Carolina 29440

843 545-3273 or www.gtcounty.org

Join us on [facebook.com/GCEMD](https://www.facebook.com/GCEMD) and follow us at twitter.com/GCEMD.

